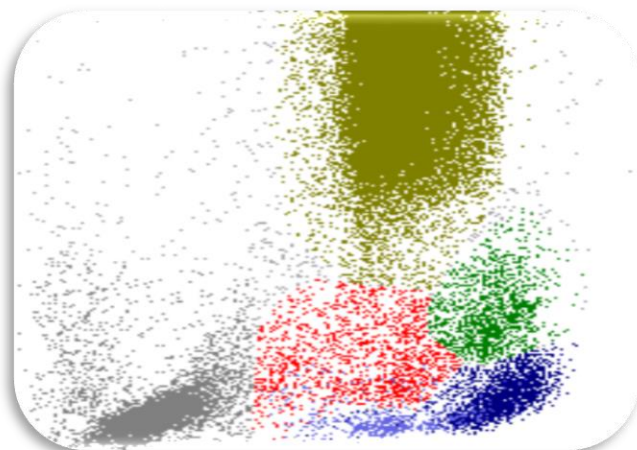

Core Facility | Augsburg

Immuno-Profiling



Instrumentation:

The Facility provides services for analyzing of cellular immunity by flow cytometry (Navios EX System, 10 colors / 3 lasers). Currently, immunophenotyping focuses at lymphocytes including subsets of B cells (naïve, non-class switched memory, class switch memory and transitional cells), T cells divided into CD4+ and CD8+ subsets (naïve, memory, central memory, effector memory, effector memory RA+ (EMRA), regulatory, and CD25+ cells as well as Type 1, 2 and 17 CD4+ T helper (THC1/THC2/THC17) and exhausted, terminal effector, early, intermediate and late activated CD8+ cytotoxic T cells), and NK cells (CD56+ CD16+, CD56dim CD16bright, and CD56bright CD16dim).

Services:

- Standardized preparation, measurement, and analyzing of lymphocytes and their subsets in fresh peripheral blood as well as in bone marrow aspirate.
- Calculation of absolute counts for all cell populations (cells / μ l).

Contact Information:

Facility Location: Department of Hematology and Oncology
University of Augsburg
Stenglinstrasse 2
86156 Augsburg

Staff Directory:

PD Dr. Andreas Rank
☎: +49 (0) 821 400 2995
✉: andreas.rank@uk-augsburg.de



Dr. Johanna Waidhauser

✉: johanna.waidhauser@uk-augsburg.de



Dr. Ann-Kristin Schmäler

✉: annkristin.schmaelter@uk-augsburg.de



Phillip Löhr

✉: phillip.loehr@uk-augsburg.de