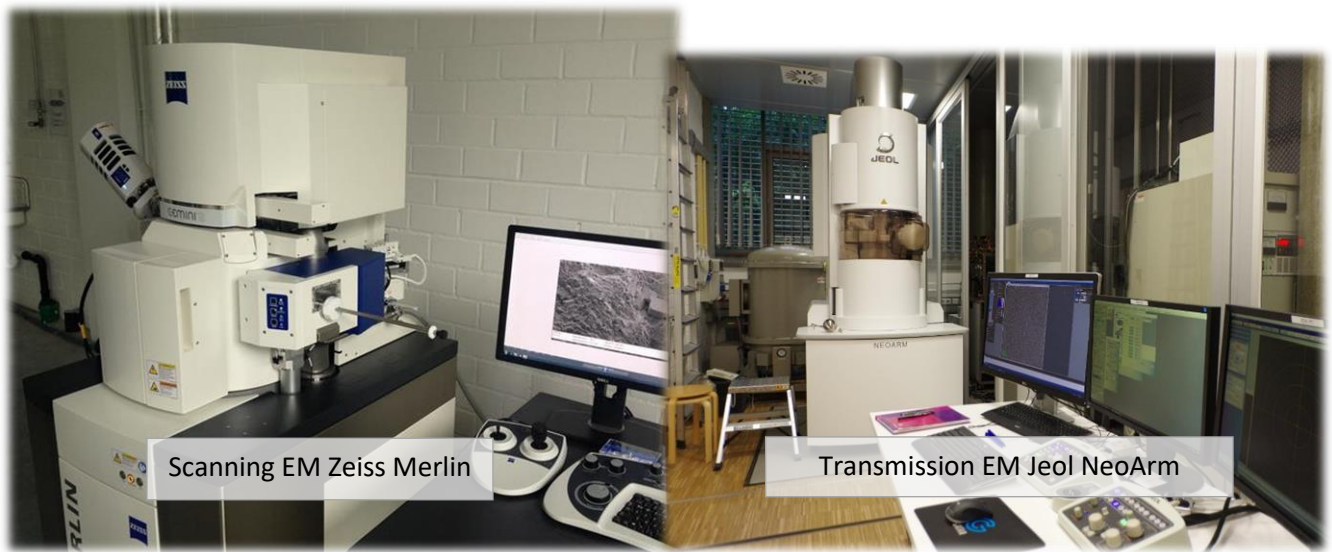


Electron microscopy - Institute of Physics



Scanning EM Zeiss Merlin

Transmission EM Jeol NeoArm

Instrumentation:

SEM: Zeiss Merlin with EDX and EBSD

Zeiss Cross beam 550 -FIB with EDX (Tomography)

TEM: Jeol 2100FX high-resolution-TEM with EDX and GIF

Jeol NeoARM Cs-corrected STEM with EDX, EELS, Tomography, low voltage

Services:

- Sample preparation (Ion-beam thinning, electropolishing, FIB, preparation of thin sections)
- SEM-investigations
- TEM-investigations
- User-Support

Contact Information:

Facility Location: Institute for Physics, Geb. R
Universitätsstr. 1
86159 Augsburg

in collaboration with

Prof. M. Koch, Institute for Theoretical Medicine (Uni Augsburg, Faculty of Medicine)



Staff Directory:

Prof. Ferdinand Haider

☎: +49 (0) 821 598 3313

✉: ferdinand.haider@uni-a.de



Prof. Manfred Albrecht

☎: +49 (0) 821 598 3478

✉: manfred.albrecht@uni-a.de



Cooperation partner (Faculty of Medicine):

Prof. Marco Koch

☎: +49 (0) 821 598 2070

✉: marco.koch@uni-a.de



Contact us:

Dr. Aladin Ullrich

☎: +49 (0) 821 598 3445

✉: aladin.ullrich@uni-a.de

